

VEITH SYSTEM

COMPETENCE in MATCHING CHECKS, STRIPES and PATTERNS

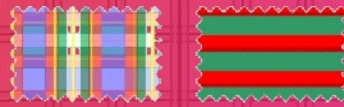
better quality
higher productivity
less fabric consumption

case study: ROI 4-5 months

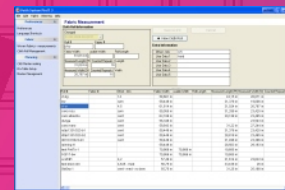
user 1	Consumption fabric on the VEITH Pin Table [m]	Consumption fabric using the VEITH Pin Table [m]	Fabric savings (difference of the VEITH Pin Table) [m]	Fabric saving
check checks	3,25	3,04	0,21	6,47%
check stripe C1	2,90	2,74	0,16	5,52%
check stripe C2	3,8	3,36	0,44	11,61%
average		3,22	0,22	6,85%

user 2	Consumption fabric on the VEITH Pin Table [m]	Consumption fabric using the VEITH Pin Table [m]	Fabric savings (difference of the VEITH Pin Table) [m]	Fabric saving
check stripe C1	2,36	2,27	0,09	3,81%
check stripe C2	3,19	3,14	0,05	1,57%
check stripe C3	3,22	3,09	0,13	4,04%
average		3,06	0,12	3,72%

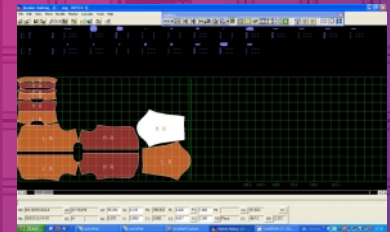
user 1	user 2	
average fabric saving	6,95%	2,72%
fabric saving per year	100 US\$ / year	36 US\$ / year
total fabric saving in 1 year (1000 m² / year)	30.000 US\$ / year	11.700 US\$ / year
total fabric saving in 5 years (5000 m² / year)	150.000 US\$ / year	58.500 US\$ / year
total fabric saving in 10 years (10000 m² / year)	300.000 US\$ / year	117.000 US\$ / year



fabric measurement

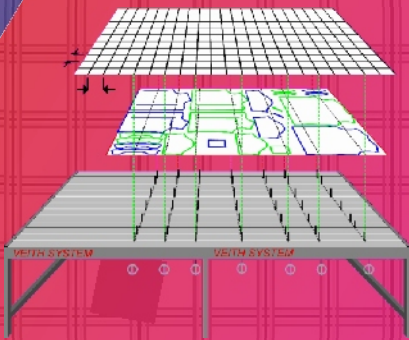


fabric registration
preprocess of CAD

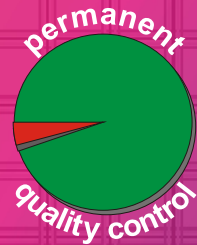


CAD marker making

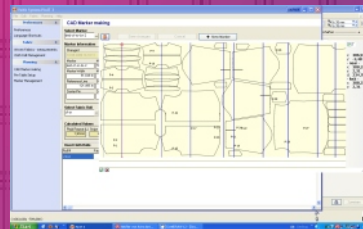
VEITH PinIT process



set up of VEITH Pin Table
according to the marker
and PinIT calculation



permanent
quality control



postprocess of CAD
setup planning for
the VEITH Pin Table

VEITH SYSTEM PinIT

Material	Width [m]	Length [m]	Weight [kg]	Volume [m³]
Master	1,5	100	1500	1500
Pin Table	1,5	100	1500	1500

VEITH SYSTEM PinIT

Material	Width [m]	Length [m]	Weight [kg]	Volume [m³]
Master	1,5	100	1500	1500
Pin Table	1,5	100	1500	1500

worksheet
needle bar
positions

complete control of the process by combining
application know how
hardware and
software